

## FACTON EPC 12.3 CM – Release Notes

Last update: 12/10/2021

### ► Contents

1. General Notes .....	2
2. Release Content – Summary.....	3
Functional Enhancements.....	4
2.1. Programs and Take Rates - Calculation of production planning for sub-projects.....	4
2.2. Column configuration for Workspace Explorer.....	4
2.3. Accidentally moving projects and folders in Workspace Explorer.....	4
2.4. Project Cockpit - Reset surcharges for all years.....	5
2.5. Updating of depreciation and imputed interest for machines.....	5
3. Other Enhancements.....	7
4. Bug Fixes.....	8

## 1. General Notes

The version FACTON EPC 12.3 CM is a maintenance release with an extended range of functions.

### ► Backward Compatibility and Installation

Installed version	Backward compatible	FACTON Update	Installation
10.X	x		x
11.X	x		x
12.0	x	x	x
12.1	x	x	x
12.2	x	x	x

## 2. Release Content – Summary

### Functional Enhancements

- Programs and Take Rates - Calculation of production planning for sub-projects
- Column configuration for Workspace Explorer
- Accidentally moving projects and folders in Workspace Explorer
- Project Cockpit - Reset surcharges for all years
- Updating of depreciation and imputed interest for machines

### Other Enhancements

- License for Programs and Take Rates
- Batch data administration - Surcharges from SOI
- Enhanced value determination for prices and tariffs
- Webreporting - Export target costs
- Permissions on the investment tab in the Project Cockpit
- Security-related information

## 3. Functional Enhancements

### 3.1. Programs and Take Rates - Calculation of production planning for sub-projects

The Programs and Take Rates logic of the multi-project can now also be used to update the production planning for the sub-projects of the included product calculations.

In prior versions, the adjustment for sub-projects had to be done manually. This process was time-consuming and error-prone. The production period and the volumes are determined and set when the quantities are set in the take rate dialog.

- This function must be activated in the system settings under System ► Programs and Take Rates ► "Set volumes and project duration...".

When determining the quantities, multiple references/usages of the sub-project and the absolute quantity are taken into account.

**Note:** As of version 12.3 the feature "Programs and Take Rates" requires a license.

### 3.2. Column configuration for Workspace Explorer

The columns displayed in the Workspace Explorer can now be administered customer-specifically.

The configuration is done via the Admin Tool ► System Settings ► System ► Liststyles – Workspace Explorer.

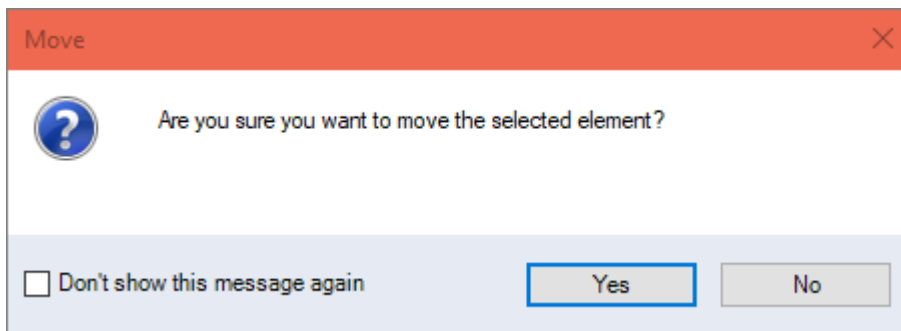
Different column views can be defined for the standard and detail view.

Currently, only static (not calculated) project attributes are supported. Attributes of type "Link" cannot be opened as a link at the moment.

### 3.3. Accidentally moving projects and folders in Workspace Explorer

Accidental moving of projects and folders in the Workspace Explorer is now prevented.

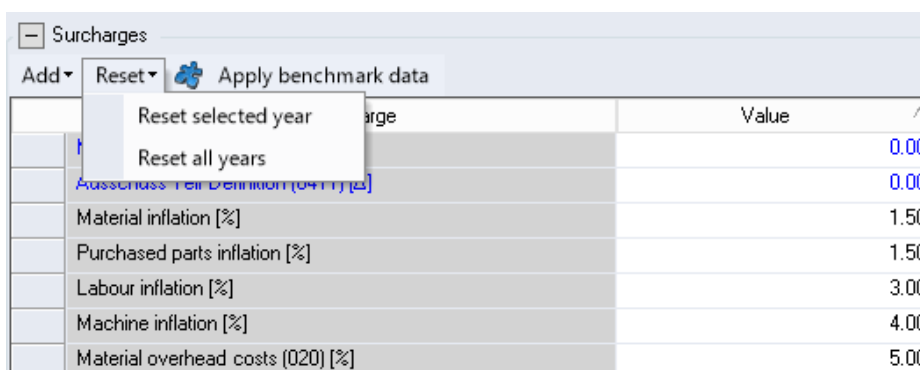
A short confirmation dialog appears if you drag and drop one or more projects onto folders in the Workspace Explorer. If you confirm the dialogue with "Yes", the action is carried out.



Activate the "Don't show this message again" checkbox if you don't want to see the confirmation dialog when moving elements. The setting is saved user-specifically and can be undone in the Settings ► User ► Miscellaneous ► System Behavior.

### 3.4. Project Cockpit - Reset surcharges for all years

In the Project Cockpit, surcharges can now be set back to the administrative value for all years. Previously, this had to be done individually for each year.



### 3.5. Updating of depreciation and imputed interest for machines

In the system settings under System ► Calculations ► Machine Depreciation and Interest, you can define whether depreciation and imputed interest should continue after the end of depreciation.

It is assumed that the machine will be replaced by an equivalent machine after the depreciation and that depreciation and interest will be incurred in the same amount per year. The additional machine investments are not taken into account.

**Note:** Maintenance mode with system changes must be active to make the settings

The setting can be activated for standard machines (administrative machines) and project-specific machines separately. The setting is effective for all machines and cannot be overwritten on individual machines or machine groups.

- For standard machines, the setting only takes effect in the calculation after database synchronization as the machine cost rate is calculated in the master data administration.
- For project-specific machines, the setting has an immediate effect. It is therefore recommended to version the projects beforehand.

The following illustration shows the machine cost rate of a machine depreciated in 2019 over the project duration. In the upper area without and in the lower area with a continuation of depreciation and interest:

Machine Rate													
Name	Value	Unit	Manual	2018	2019	2020	2021	2022	2023	2024	2025	2026	
Total		EUR/h		6,37	6,39	2,96	2,96	2,96	2,96	2,96	2,96	2,96	2,96
Variable		EUR/h		2,93	2,94	2,96	2,96	2,96	2,96	2,96	2,96	2,96	2,96

Machine Rate													
Name	Value	Unit	Manual	2018	2019	2020	2021	2022	2023	2024	2025	2026	
Total		EUR/h		6,37	6,39	6,41	6,41	6,41	6,41	6,41	6,41	6,41	6,41
Variable		EUR/h		2,93	2,94	2,96	2,96	2,96	2,96	2,96	2,96	2,96	2,96

## 4. Other Enhancements

- License for Programs and Take Rates
  - The use of programs and take rates is subject to licensing as of version 12.3. The function is offered as a module / server license and is available to all users after installation.
- Batch data administration - Surcharges from SOI
  - In batch data administration, surcharges can now be entered by default from SOI (start of investment) on a project-specific basis. This way, surcharges that affect investment values can be administered.
- Enhanced value determination for prices and tariffs
  - The value determination for tariffs and prices has been extended and now also returns values if they are more than 10 years before SOP or after EOP.
  - This function can be activated or deactivated in the system settings under System ► *Dynamic data* ► "Do not consider prices and tariffs...".
  - The setting can be overwritten project-specifically. Calculation results in versions are not changed by the setting.
- Webreporting - Export target costs
  - For web reporting, the annual target costs and the variance are now also provided. For this purpose, the table **WRSurcharges** has been extended by the two surcharges: **VD\_TargetCost** and **VD\_VDTargetCostDeviation**. The surcharges are available on projects (**WRProjectCost**), parts (**WRPartCost**), manufacturing processes (**WRProcessCost**), and additional costs (**WRCostofAdditionalCost**).
- Rights on the investment tab in the Project Cockpit
  - Project-specific read and write permissions can be administered for the investment tab in the Project Cockpit. The permission can be administered in the rights management under *Project* ► *Edit investments*.
  - If the user does not have permission, the "Investments" category is not displayed in the Project Cockpit (also when comparing projects).
  - With read permission, the category is displayed as read-only. In addition, the authorization is checked for the CEA license (Capital Efficiency Analysis).
- Security-related information
  - Security-related information is no longer stored in log files.

## 5. Bug Fixes

- An error in switching the calculation modes has been fixed. When switching from Estimation to Standard and back to Estimation, the initially entered value got lost. The error occurred for assemblies and manufacturing parts in Estimate and Offer mode.
- Project information such as basic data in the information window has been extended by a tooltip so that longer designations can also be displayed.
- #64141: Fixed a bug with sales prices associated with alternatives on the top-level assembly. Changes to the sales prices are now independent of the selected alternative and always stay the same.
- In the data administration, the machine parameters are displayed in the table view even if a manual machine cost rate is used.
- #15569: An error when loading the ribbon was fixed. The error occurred mainly when adding reports.
- #15055: An error in the calculation of the return on sales in the Batch Data Administration has been fixed. The error occurred when other actions were performed in the client during the calculation.
- The usage list can no longer be invoked for multiple selections of administration objects. The invoke was possible but only executed and displayed for the first object selected.
- #16040: An error in the display of internal costs in the list style of the costing type has been fixed. It could happen that the costs were not displayed at the level of the work plan.
- #15997: In the data administration, the internal names for cost allocation and cost type to additional costs were not correctly displayed in English.
- #16022: An error in the display of the calculation parameters for gas and water costs at the location in the administration has been fixed.
- #16074: An error in the Excel BoM Import has been fixed. Some objects were not imported into the data administration when importing over multiple spreadsheets.
- #16090: An error when "Saving As" with new domain logic was fixed. The values of inactive calculation modes were not copied.
- #16083: An error when saving multi projects has been fixed.
- #16163 Fixed an error when accessing necessary files for the FACTON Service API.
- An error in the referencing of machines was corrected. The year of acquisition for reference copies was not set correctly.
- The order of manufacturing processes after versioning a project with new domain logic does not change anymore.
- #16170: Fixed an error when saving configuration projects. Saving sometimes took a long time even though no changes were made to the quantities.
- An error in the versioning of basic data has been fixed.
- #16122: An error in data base synchronization was fixed. The application could crash after sorting the differences and start detecting differences again.



- #16131: The performance problems when reloading assemblies in multi-user mode have been fixed.
- An error when editing sales prices in batch data maintenance has been fixed. The error occurred when the quantities were previously calculated and set using the take rates logic.
- #16335: An error in the Excel BoM Import with machines has been fixed. The currency is now correctly taken into account.
- Fixed an error when exporting project costs for web reporting. Costs in years prior to the active costing year were not exported. This has been fixed.
- #16357: Fixed an error when saving as with new domain logic active and using reference copies.
- A possible program crash when calculating the average return on sales in batch data administration has been fixed.
- Deleted part prices in Database Synchronization were not synchronized. This error was fixed.
- #16373: Fixed an error when changing the cost level for sub-projects using batch data administration.