

FACTORN EPC 14.0 CM

# COST MANAGEMENT

## LEGAL NOTICE

Release: FACTON EPC 14.0 CM

Document Revision: (5/22/2023)

Copyright © 2023 FACTON GmbH

Released by:

FACTON GmbH  
Konrad-Zuse-Ring 12b  
14469 Potsdam, Germany

All rights reserved. No part of this product may be reproduced in any form (print-out, photocopy, microfilm or other method), modified, duplicated or published using electronic systems without written permission of the developer or manufacturer.

The information contained in this user guide is subject to change without further notification. FACTON GmbH does not accept any liability in this regard. The software described in this document is provided on the basis of a licensed contract and may only be used in accordance with the terms of that agreement.

FACTON and the FACTON logo are registered trademarks of FACTON® GmbH in Germany and/or other countries.

Microsoft, MS, Windows, Windows NT and Excel are registered trademarks of the Microsoft Corporation in the USA and/or other countries.

All other trademarks are the property of their respective owners.

## LIABILITY

The Contractor is subject to unlimited liability only in the case of breach of duty or gross negligence on the part of its organization, management or auxiliary agents.

The Contractor assumes liability for minor negligence on the part of the organization and auxiliary agents only where a basic contractual obligation has been breached (cardinal obligation); in this case liability is limited to the typically foreseeable damages within the scope of the contract. The limitation of liability does not apply to damages arising from injury to life, body or health.

The liability for loss of data is limited to the costs which would normally be incurred for restoring appropriately and regularly secured backup copies.

The provisions of the German Product Liability Law remain unaffected (§ 14 ProdHaftG).

In the case of force majeure, which considerably obstructs or makes impossible the fulfillment of obligations by the Contractor, the Contractor reserves the right to postpone the fulfillment of obligations for the duration of the obstruction plus a reasonable period of recuperation. Strikes, lockouts or similar circumstances that affect the Contractor either directly or indirectly are considered force majeure.

## SUPPORT

For any maintenance and support issues, you can contact the FACTON Support Team via phone or e-mail. You can find the support hours and phone numbers in your support contract.

### Support Requests:

via support(at)facton.com

via +49 1805-FACTON



**Further Information** please see the [Customer Portal](#) on our website.

TABLE OF CONTENTS

<b>1. FACTON EPC 14.0 CM</b>	<b>5</b>
<i>1.1 System Requirements</i>	<i>5</i>
<i>1.2 Backward Compatibility and Installation</i>	<i>5</i>
<i>1.3 Functional Enhancements</i>	<i>5</i>
1.3.1 Editing Project-specific Machines in the Batch Data Administration	5
1.3.2 Project KPI View	6
<i>1.4 Other Enhancements</i>	<i>6</i>
1.4.1 Multilingual Report Names and Descriptions	6
1.4.2 New Table Design	7
1.4.3 Auto-Hide in Workspace Explorer	8
1.4.4 Removed ROI avg.	8
1.4.5 Enforced password complexity	8
<i>1.5 Announcement of Discontinuation</i>	<i>8</i>
<b>2. BUG FIXES</b>	<b>9</b>
2.1 FACTON EPC 14.0 CM	9

## 1. FACTON EPC 14.0 CM

The version FACTON EPC 14.0 CM is the new main version with an extended range of functions.

### 1.1 SYSTEM REQUIREMENTS

see Technical Factsheet

### 1.2 BACKWARD COMPATIBILITY AND INSTALLATION

INSTALLED VERSION	BACKWARD COMPATIBLE	FACTON UPDATE	INSTALLATION
11.X	X		X
12.X	X		X
13.X	X		X

### 1.3 FUNCTIONAL ENHANCEMENTS

#### 1.3.1 Editing Project-specific Machines in the Batch Data Administration

The static properties (properties without a time validity) of project-specific machines can now be edited in the Batch Data Administration. Editing and exchanging across multiple positions is supported. When exchanging machines, the references remain intact. As before, the properties of standard machines cannot be edited.

Machine

Name													
Name : Fully automated Assy line (12 items)													
<input type="checkbox"/>	Synchronize	Reference ID	Project Name	Is Project-specific	Reference Type	Shift Model	Allocation Basis	Emission Calculation	Replace Machine	CO2e Emission Factor [g/h]	Acquisition Cost		
<input type="checkbox"/>	<input type="checkbox"/>	5,845	Servomotor NA	<input checked="" type="checkbox"/>	Reference (Origin) Reference	4-shift	Project utilization	Calculated	<input type="checkbox"/>	Calculated	Calculated		
<input type="checkbox"/>	<input type="checkbox"/>	5,849		<input type="checkbox"/>		4-shift	Project utilization	Calculated	<input type="checkbox"/>	Calculated	Calculated		
<input type="checkbox"/>	<input type="checkbox"/>	5,827	Servomotor EU	<input checked="" type="checkbox"/>		4-shift	Project utilization	Calculated	<input type="checkbox"/>	Calculated	Calculated		
<input type="checkbox"/>	<input type="checkbox"/>	5,827		<input checked="" type="checkbox"/>		4-shift	Project utilization	Calculated	<input type="checkbox"/>	Calculated	Calculated		
<input type="checkbox"/>	<input type="checkbox"/>	5,843	Servomotor APAC	<input checked="" type="checkbox"/>		4-shift	Project utilization	Calculated	<input type="checkbox"/>	Calculated	Calculated		
<input type="checkbox"/>	<input type="checkbox"/>	5,846		<input type="checkbox"/>				Calculated	<input type="checkbox"/>	Calculated	Calculated		
<input type="checkbox"/>	<input type="checkbox"/>	5,828	Servomotor - BOM Import	<input type="checkbox"/>				Manual	<input type="checkbox"/>	0.00	0.00		
<input type="checkbox"/>	<input type="checkbox"/>	5,829	Servomotor - BOM Import	<input type="checkbox"/>				Manual	<input type="checkbox"/>	0.00	0.00		
<input type="checkbox"/>	<input type="checkbox"/>	5,833		<input checked="" type="checkbox"/>		4-shift	Project utilization	Calculated	<input type="checkbox"/>	Calculated	Calculated		
<input type="checkbox"/>	<input type="checkbox"/>	5,834		<input type="checkbox"/>				Calculated	<input type="checkbox"/>	Calculated	Calculated		
<input type="checkbox"/>	<input type="checkbox"/>	5,835		<input checked="" type="checkbox"/>		4-shift	Project utilization	Calculated	<input type="checkbox"/>	Calculated	Calculated		
<input type="checkbox"/>	<input type="checkbox"/>	5,836		<input type="checkbox"/>				Calculated	<input type="checkbox"/>	Calculated	Calculated		
Name : R+S Stanztechnik Typ 1030 Automatische Wasserjet Robi-Schneidanlage (4 items)													
<input type="checkbox"/>	Synchronize	Reference ID	Project Name	Is Project-specific	Reference Type	Shift Model	Allocation Basis	Emission Calculation	Replace Machine	CO2e Emission Factor [g/h]	Acquisition Cost		
<input type="checkbox"/>	<input type="checkbox"/>	5,851	Servomotor NA	<input checked="" type="checkbox"/>		4-shift	Project utilization	Manual	<input type="checkbox"/>	0.00	0.00		
<input type="checkbox"/>	<input type="checkbox"/>	5,855	Servomotor EU	<input checked="" type="checkbox"/>		4-shift	Project utilization	Manual	<input type="checkbox"/>	0.00	0.00		
<input type="checkbox"/>	<input type="checkbox"/>	5,848	Servomotor APAC	<input checked="" type="checkbox"/>		4-shift	Project utilization	Manual	<input type="checkbox"/>	0.00	0.00		
<input type="checkbox"/>	<input type="checkbox"/>	5,837	Servomotor - BOM Import	<input checked="" type="checkbox"/>		4-shift	Project utilization	Manual	<input type="checkbox"/>	0.00	0.00		

### 1.3.2 Project KPI View

The project key figures for the opened single projects and multi projects can be calculated and displayed in a separate window. Currently, the following FACTON internal key figures are displayed:

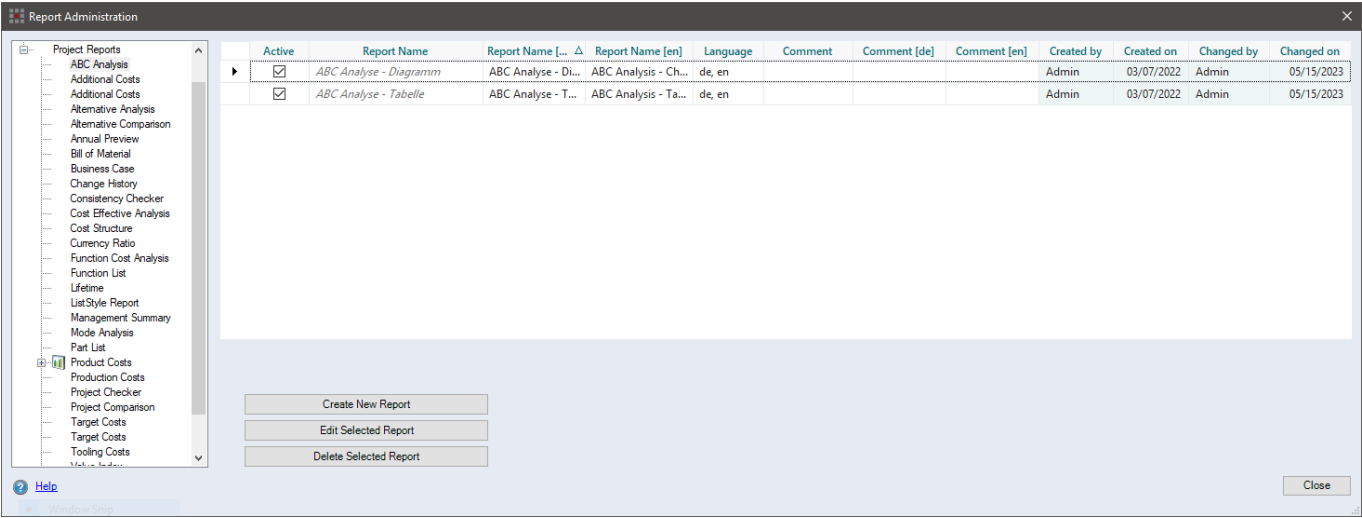
- Total quantity
- Revenue
- Product costs
- Profit
- Investment (total over project lifetime)
- Total pay in and pay out
- Return on investment
- Static and dynamic amortization time
- Interest rate
- Net present value
- Internal rate of return

Servomotor EU (current status of work)							Key Figures			
Project type: Single Project Life cycle: 2022 - 2028 Calculation year: 2022 Quantity: 220,000 Annual quantity: 15,000 Basic data: Location: Berlin							Project: Servomotor EU			
CO2e Manufacturing g/piece	CO2e Material g/piece	Total Emission g/piece	Currency	Material Direct Cost EUR/piece	Material Overhead EUR/piece	Material Co EUR/piece	Name	Abbreviation	Value	Unit

## 1.4 OTHER ENHANCEMENTS

### 1.4.1 Multilingual Report Names and Descriptions

In the Report Administration the title and description of reports can be administrated in multiple languages. This is particularly useful when the same report is used in different languages. The description of the report is additionally used as a tooltip on the report in the menu ribbon.



1.4.2 New Table Design

A new design for the display of tables can be activated in the user settings (User | Display | UI preview features). To improve readability, the row height has been adjusted and a larger font spacing has been chosen. In addition, the grouping has been revised and the display of read-only cells has been standardized.

Elements															
Part type															
Name	Name [German]	Name [English]	Inventory number	Dimensions	ISO identifier	DIN identifier	Rating	Refinement	Mass [g]	Order number	Product group	Custo...	Created by	Created on	
Part type: Purchased Parts (9 items)															
Wire spring steel 63	Wire spring steel 63	Wire spring steel 63	5833						0.00				Admin	06/07/2	
Self tapping screw C3...	Self tapping screw C3...	Self tapping screw ...	5801						0.00				Admin	06/07/2	
Self tapping screw	Self tapping screw	Self tapping screw	5810						0.00				Admin	06/07/2	
Lodestone segment 26...	Lodestone segment ...	Lodestone segmen...	5841						0.00				Admin	06/07/2	
DC E-Motor wo wo...	DC E-Motor wo wo...	DC E-Motor wo wo...	5802						0.00				Admin	06/07/2	
Cover right	Cover right	Cover right	5818						0.00				Admin	06/07/2	
Bushing	Bushing	Bushing	5891						0.00				Admin	06/07/2	
Bolt hardened	Bolt hardened	Bolt hardened	5806						0.00				Admin	06/07/2	
Assy Brush	Assy Brush	Assy Brush	5834						0.00				Admin	06/07/2	
Part type: Raw Material (1 item)															
ST37-2 / S235JR	ST37-2 / S235JR	ST37-2 / S235JR	931						0.00				Admin	06/07/2	
Prices															
Price [Currency]	Currency	Transport [projC]	Quantity	Transport [%]	Price reference	Duty [projC]	Estimation	Duty [%]	Scrap back price [projC/kg]	Origin Type	Origin	Origin Country Group	CO2e EF	CO	
7.82	EUR	0	1	0	piece	0		0	0	0	Locations	Berlin	45.89	g	
55.89	CNY	0	1	0	piece	0		0	0	0	Locations	Beijing	67.78	g	
6.89	USD	0	1	0	piece	0		0	0	0	Locations	Washington...	45.89	g	
8.65	EUR	0	1	0	piece	0		0	0	0	Customers	BMW	65.00	g	
8.34	EUR	0	1	0	piece	0		0	0	0	Customers	Daimler	65.00	g	
7.23	EUR	0	1	0	piece	0		0	0	0	Customers	FCA	65.00	g	
10.56	USD	0	1	0	piece	0		0	0	0	Customers	Ford	65.00	g	
11.45	USD	0	1	0	piece	0		0	0	0	Customers	GM	65.00	g	
5.34	EUR	0	1	0	piece	0		0	0	0	Customers	PSA	65.00	g	
6.45	EUR	0	1	0	piece	0		0	0	0	Customers	Renault	65.00	g	
4.89	EUR	0	1	0	piece	0		0	0	0	Customers	Toyota	65.00	g	
8.99	EUR	0	1	0	piece	0		0	0	0	Customers	Volvo	65.00	g	
7.98	EUR	0	1	0	piece	0		0	0	0	Customers	VW	65.00	g	
Name	Material ID	Mass	Unit	Price [Currency]	Currency	Quantity	Price reference	Material surcharge factor	Valid from	Valid to	Origin				

#### 1.4.3 Auto-Hide in Workspace Explorer

The auto-hide animation of the Workspace Explorer was removed.

#### 1.4.4 Removed ROI avg.

The average return on investment (ROI avg.) has been removed as a key figure from the application.

#### 1.4.5 Enforced password complexity

The complexity of passwords is no longer optional for new passwords. Passwords must be at least 8 characters long and contain a combination of uppercase and lowercase letters, numbers, and special characters.

### 1.5 ANNOUNCEMENT OF DISCONTINUATION

The offline feature will no longer be supported as of version 14.0.



## 2. BUG FIXES

### 2.1 FACTON EPC 14.0 CM

- **#17563:** An issue with the translation of error messages during Excel import has been resolved.
- **#17674:** An error when copying purchased part prices with value lists (lookup table) in the Data Administration was fixed.
- **#17697:** The performance issues in the "Investments" category in the Project Cockpit were corrected.
- **#17720:** An error in determining the investment period for multi-projects has been fixed.
- **#17807:** An error that occurred when saving or versioning configuration projects has been fixed. After these actions, the assignment of manufacturing processes could potentially go missing.
- **#17823:** An error with user login after server restart has been fixed.
- **#17683:** An error when saving as (duplicating) projects has been fixed. The error occurred when manufacturing processes were evaluated with foreign currency in "Offer" mode. The error occurred only when the new domain logic was enabled.
- **#17866:** An error in the standard distribution of investments has been fixed.
- **#17877:** An error with Excel import has been fixed. The error occurred when attempting to import Excel cells with errors ("#N/A" and "#Spill").
- **#17915:** A database synchronization error between raw material prices (not purchased part prices) and the project has been resolved.
- **#17946:** An error with the Excel import of emission factors for purchased parts has been resolved. If no values were mapped, the fields in the Data Administration remain blank.
- **#17770:** An error when canceling the "Offer" dialog was fixed. After canceling, the insertion of the part was also undone.
- **#18077:** An error when loading and displaying the selected folders in the batch versioning has been fixed.
- **#18062:** The investment distribution of additional costs with manual distribution is initially no longer pre-assigned.
- An error with inserting purchased parts from the Data Administration via drag & drop has been fixed. The unit was incorrectly set when a unit class other than "piece" was used.